

EXHIBIT "A"



GENERAL NOTES:

1. VINYL COVE BASE TO BE JOHNSONITE, 4" HIGH X 1/2" THICK; COLOR 167 FUDGE

2. BASE BID FLOORING TYPES KEY:

EXISTING FLOOR - NO CHANGE

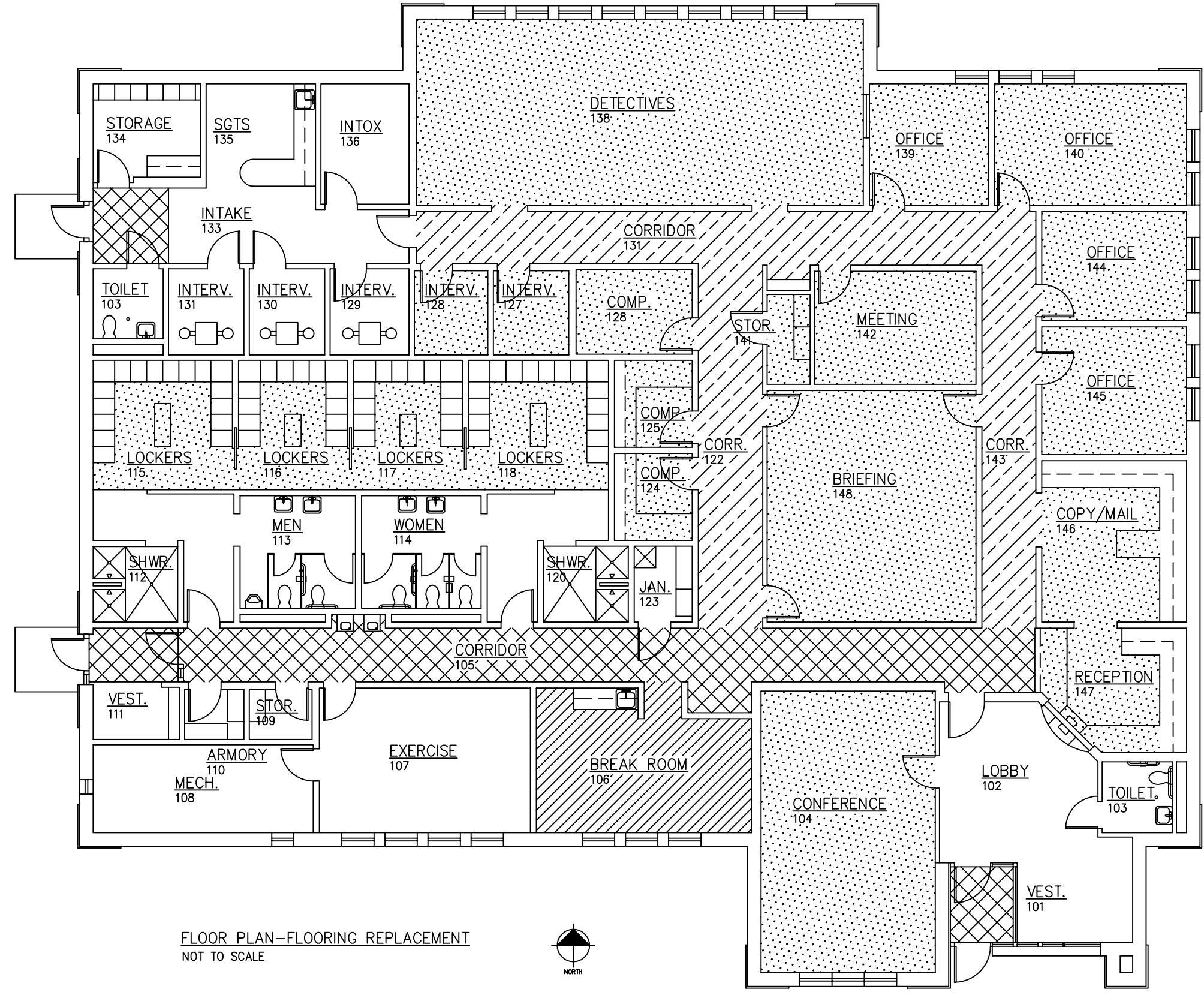
CARPET TILES:
TANDUS DIVIDE 03863 24"x24"
COLOR: 79008 BURGESS
QUARTER TURN PATTERN

WALKOFF TILE:
MOHAWK 24"x24"
STEP UP II/GT311; 859 WALNUT
QUARTER TURN PATTERN

BASE BID:
TANDUS DIVIDE 03863 24"x24"
COLOR: 79008 BURGESS
QUARTER TURN PATTERN

ALTERNATE 1:
WALKOFF TILE: MOHAWK 24"x24"
STEP UP II/GT311, 859 WALNUT
QUARTER TURN PATTERN

RUBBER FLOOR TILES
NORA SYSTEMS 39.53" x 39.53"
NORAMENT GRANO
COLOR: TO BE DETERMINED FROM
STANDARD COLORS



FLOOR PLAN-FLOORING REPLACEMENT
NOT TO SCALE



DRAWN BY:
ENLKA
DATE: 08/16/2018
REVISED:

CITY OF MADISON POLICE-NORTH DISTRICT
FLOORING REPLACEMENT - CONTRACT #8245
2033 LONDONDERRY DR., MADISON, WI